

Country of Origin : China  
 Operating Temperature : 0~40 [°C]  
 Dimension : 73.8 × 44.3 × 28.8 [mm]  
 Certified AC Plugs: EU, UK, USA/Japan/Taiwan, Aus, China, Korea  
 Efficiency level (ErP) : VI



Approvals / Marks :



**Specifications**

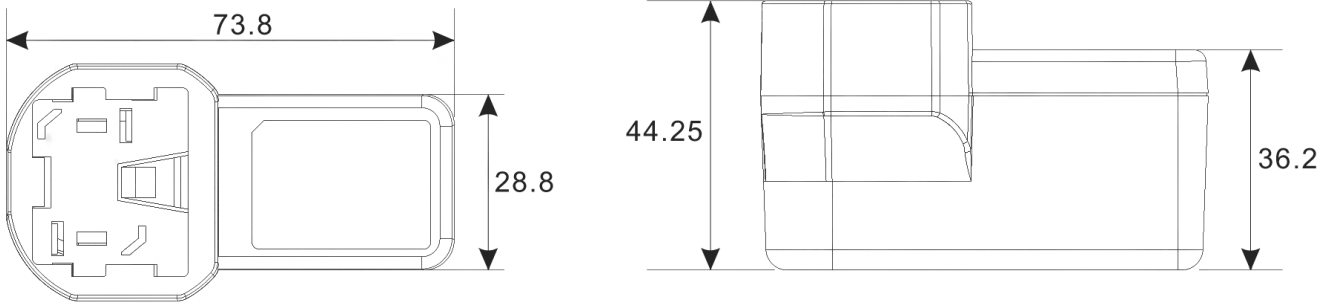
Model	Voltage DC [V]	Loading [A]	Max. Power [W]	Ripple / Noise [mV] p-p	Connector [mm]
SYS1001-0505-Wxx*	5	0~1.0	5	150	2.1x5.5x11
SYS1001-0608-Wxx*	7,5	0~0.8	6	150	2.1x5.5x11
SYS1001-0609-Wxx*	9	0~0.66	6	150	2.1x5.5x11
SYS1001-0612-Wxx*	12	0~0.5	6	150	2.1x5.5x11
SYS1001-0615-Wxx*	15	0~0.4	6	200	2.1x5.5x11
SYS1001-0618-Wxx*	18	0~0.33	6	200	2.1x5.5x11
SYS1001-0624-Wxx*	24	0~0.25	6	240	2.1x5.5x11

**Features:**

Certified plugs Wxx = W2E - Europe | W3U - England | W2 - USA, Canada, Japan, Taiwan | W2A - Australia | W2C - China | W2K - Korea  
 Output connector: standard: 2.1 x 5.5 x 11mm or customer requirement | Regulated Output With Low Ripple Noise | Safety Agency Requirements and EMI/EMS Certified

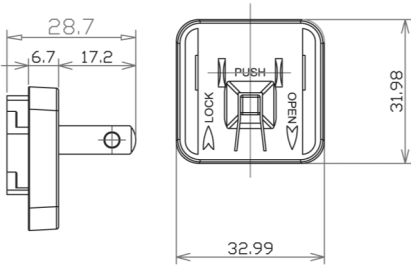
OUTPUT		CE	
Turn delay	3000ms max@AC low line input@output full load	EMC	2014/30/EU
Hold up time	8ms min@AC nominal input@output full load	LVD	2014/35/EU EN 62368-1:2014+A11:2017
Efficiency (Normal)	>72%@115v/60HZ,230V/50HZ input & Full load	<b>SAFETY</b>	
Transient response (dv,tmax)	0.4V dv max At AC nominal input loading from 20%load to 80% 16ms tmax Dynamic rise time 10 us max,duty 40ms max,Dynamic load step is slew rate of 0.5A/us	cTUVus   FCC   GS   CE   CB   RCM   SAA   PSE   EAC   LVD   UKCA	
Power out.Limit	6W	<b>OTHERS</b>	
Burn in limit	Full load 2 Hours	Dielectric Strength (Hi-pot)	I/P-O/P:3000VAC
Power consumption	0.1W max. At AC nominal input@output min load	M.T.B.F	500,000 Calculated Hours at 25°C, by Telcordia SR-332
INPUT		Cable Length	1370mm (4.5 feet) standard cable or as required
Voltage	(90~264)VAC	PLD (power line disturbance)	Line power surge   Line voltage SAG-more info on request
Frequency	(47~63)hz	Cooling method	Natural Convection Cooling
Current	0.5A rms@AC low line input and DC output full load	Housing material	PC + ABS
Inrush Surge Current	30/40A max@power supply cold start,ambient temperature 25°C	Temperature coefficient:	< ±0.5% / °C
leakage current	0.25mA Max	ENVIRONMENT	
PROTECTION		Temperature	Operating: 0~40°C / Storage: -20~85°C
Over current/ Short protection	The power supply will be auto recovered when over current or short circuit faults remove (fold back). Is defined as any output impedance of less than 0.1Ω. The power supply will be auto	Humidity	Operating: 8%~90%RH / Storage: 5%~95% RH non condensing
Over Voltage	The power supply will not be auto recovered when faults remove	WEIGHT	
Input protection	F1 1A/250V Fuse The power supply shall be protected against	NW:	80g/pc + plug
No Load protection	The power supply is provided with no load operation to prevent	GW:	95g/pc + plug
Protection class	II	PACKING	
		Box	100 pcs/1 box

**Mechanical case specification:**

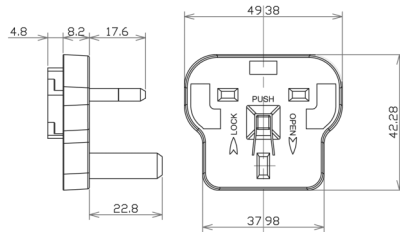


**Mechanical specification (country housing):**

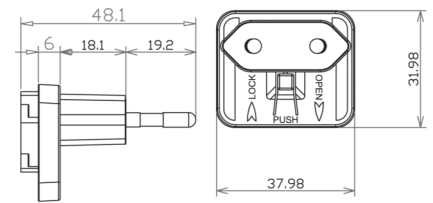
US / Japan type (W2)



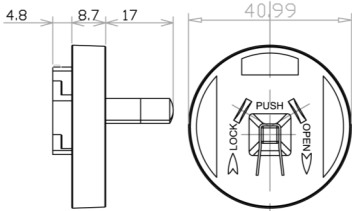
UK type (W3U)



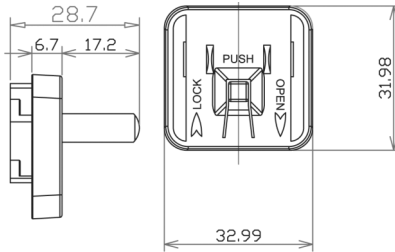
Europe type (W2E)



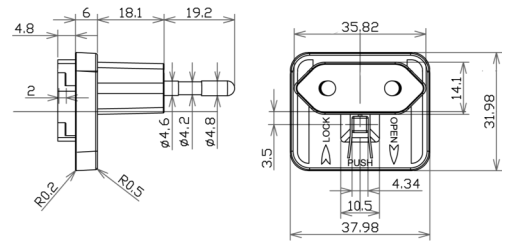
Australia type (W2A)



China type (W2C)



Korea type (W2K)



**Cable specification:**

