

Country of Origin : China

Efficiency level (ErP) : VI



GREEN MODE **RoHS**



Specifications

Model	Voltage DC [V]	Loading [A]	Max. Power [W]
STD 12090-T3	12	0~9.0	108
STD 15080-T3	15	0~8.0	120
STD 16075-T3	16	0~7.5	120
STD 18066-T3	18	0~6.6	120
STD 19063-T3	19	0~6.3	120
STD 20060-T3	20	0~6.0	120
STD 24050-T3	24	0~5.0	120
STD 30040-T3	30	0~4.0	120
STD 48025-T3	48	0~2.5	120
STD 56021-T3	56	0~2.15	120

Features:

Compliant to DoE 2016 (Level VI) | ErP Stage 2, NRCan & GEMS Level VI | No Load Power Consumption < 0.1 W | Regulated Output with Low Ripple Noise | 1 Year Warranty

INPUT

Voltage	AC 100 V – 240 V
Frequency	50 Hz - 60 Hz
Current	1.6 A max.
Protection	Internal Primary Current Fuse, Inrush Limiting

OUTPUT

Load Regulation	± 5 % (typical)
Ripple	1 % – 2 % V p-p max. for output voltage at full load
Transient Response	0.5 ms for 50 % load change typical
Leakage Current	0.25 mA max.
Protection	Short circuit Protection • Over Voltage Protection • Over Current Protection

OTHERS

Cooling	Convection
Efficiency	DoE Level VI • Energy Star • ErP Stage 2 • NRCan & GEMS Level VI Certified
Holdup Time	10 ms at full load
Dielectric Withstand	AC 3000 V Primary – Secondary
MTBF	300,000 calculated hours at 25 °C by telcordia SR-332

ENVIRONMENT

Temperature	Operating: 0 °C – 40 °C / Storage: -20 °C – 80 °C
Humidity	Operating: 20 % RH – 80 % RH / Storage: 10 % RH – 90 % RH

Safety	IEC / EN / UL 62368 • CE • RCM • PSE • BSM • UKCA
Case Dimensions	168×66×39 mm
Weight	590 g

8.Mechanical :

8.1 Weight : 630g Typical

8.2 Cable Type : Black UL1185 18AWG
(Wire + Plug)

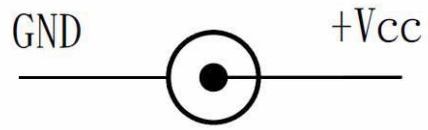
Plug : $\varnothing 5.5 * \varnothing 2.1 * 11\text{mm}$
(Tuning Fork & Cannelure)

8.3 Cable Length : 1500mm

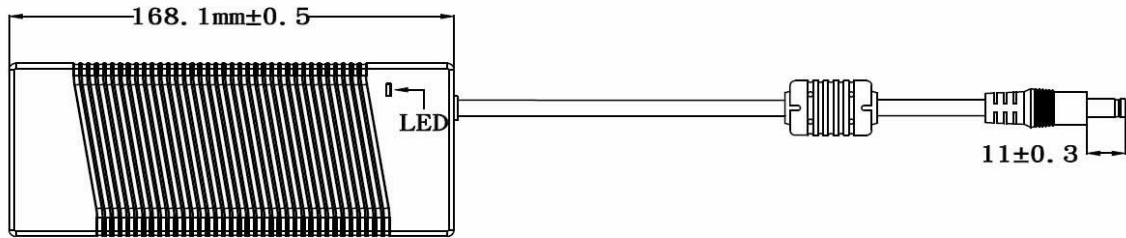
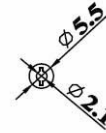
8.4 Case Dimension : 168.1mm(L)*65.9mm(W)*39mm(H)

8.5 Material Flammability : UL 94V-0

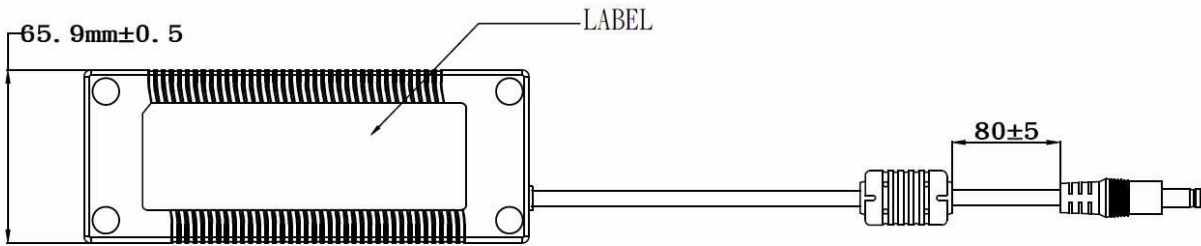
8.6 External Apperance : As drawing below (Scale \rightarrow mm)



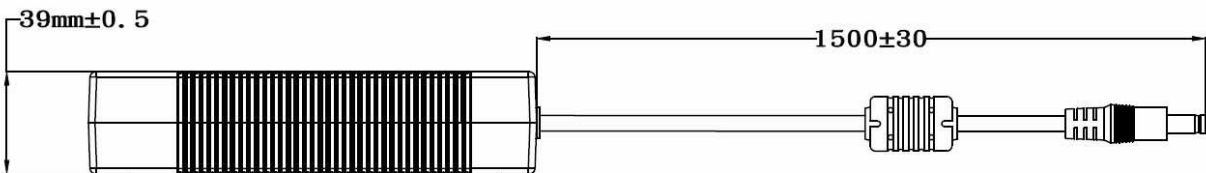
Output Cable Plug Pin Assignment



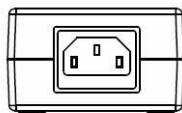
TOP-VIEW



BOTTOM-VIEW



SIDE-VIEW



FRONT-VIEW